

18" SHALLOW-DEPTH SERIES REFRIGERATOR

HH24RS | 24" INDOOR MODEL



QUALITY & INNOVATION
THAT **INSPIRES**



Solid Door Model



Glass Door Model



GENERAL SHALLOW-DEPTH SERIES FEATURES

- 32" height including leveling legs
- **Industry Exclusive** 18" depth for design flexibility
- Plug recessed for true 18" depth
- Zero-clearance hinging allows for abutment with surrounding cabinetry
- Best in Class 700 Btu commercial-grade compressor
- Front-vented, RAPIDcool forced-air refrigeration system
- Commercial-grade stainless steel interior and exterior
- **Industry Exclusive** convertible door design allows all doors the ability to be converted to wood overlay from stainless steel
- **Industry Exclusive** adjustable, full-extension pull-out shelves
- Stainless-steel ball-bearing glides provide smooth movement of shelves
- Low E, UV-coated glass provides industry leading insulation and protection.
- Interior temperature control and light
- Optional door locks and Industry-Exclusive drawer locks (factory installed)
- Stacking kit available
- Indoor and outdoor models available
- Also available - 18" Shallow-Depth Beverage Center and Wine Reserve
- 3.1 cubic feet of capacity
- Industry Best Three Year Warranty plus additional three years on sealed system

HH24RS FEATURES

- Available with solid stainless steel door, solid wood overlay door, stainless steel glass door or wood overlay glass door
- Includes two (2) full-extension pull-out shelves
- Extra storage underneath shelves for additional bottles
- Product capacity is 95 cans (12 oz.)
- Refrigerator temperature 30°- 42°F (factory set at 38°)

Form No.HH24R
Rev. 01.10.2014

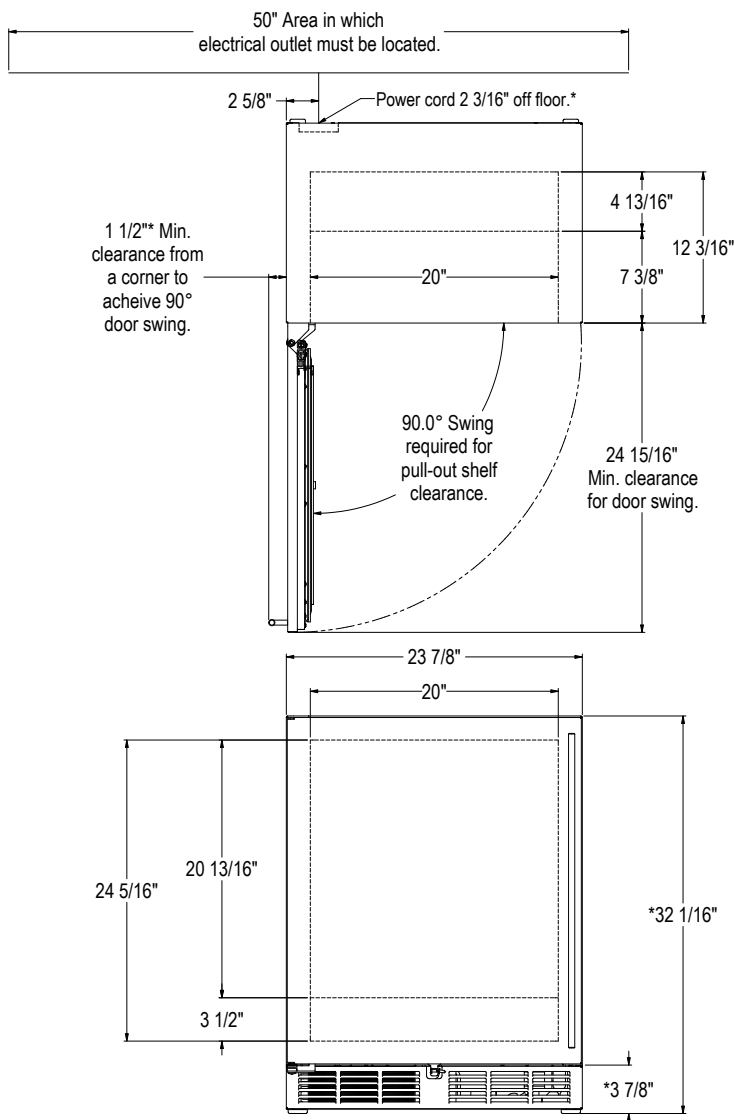
PRODUCT SPECIFICATIONS

Overall Width	23-7/8" (60.64 cm.)
Overall Height	32" (81.28 cm.)
Overall Depth	18" (45.72 cm.)
Opening Width	24" (60.96 cm.)
Opening Height	32-1/8" (81.60 cm.)
Opening Depth	18" (45.72 cm.)
Refrigerated Volume	3.1 cu. ft.
Door Swing Clearance	25" (63.5 cm.) minimum
Electrical	115V, 60Hz, 1 Phase, 2.3 amps
Annual Energy Usage	289 kWh/yr
Plumbing	None Required
Shipping Weight	185 lbs (83.91 kg.)

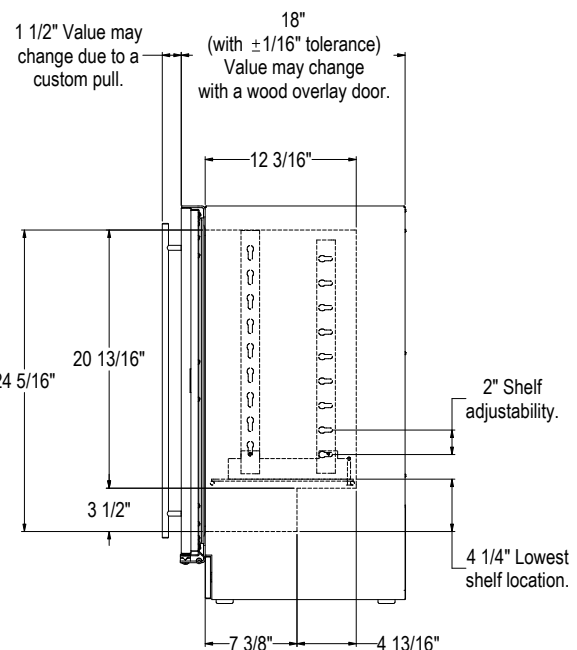
INDOOR MODELS

HH24RS-1L*	Solid stainless steel door, hinge left
HH24RS-2L*	Solid wood overlay door, hinge left
HH24RS-3L*	Stainless steel glass door, hinge left
HH24RS-4L*	Wood overlay glass door, hinge left

* Also available hinge right



*- Leg levelers can add 3/4" to these dimensions when fully extended.



Form No.HH24R
Rev. 01.10.2014