

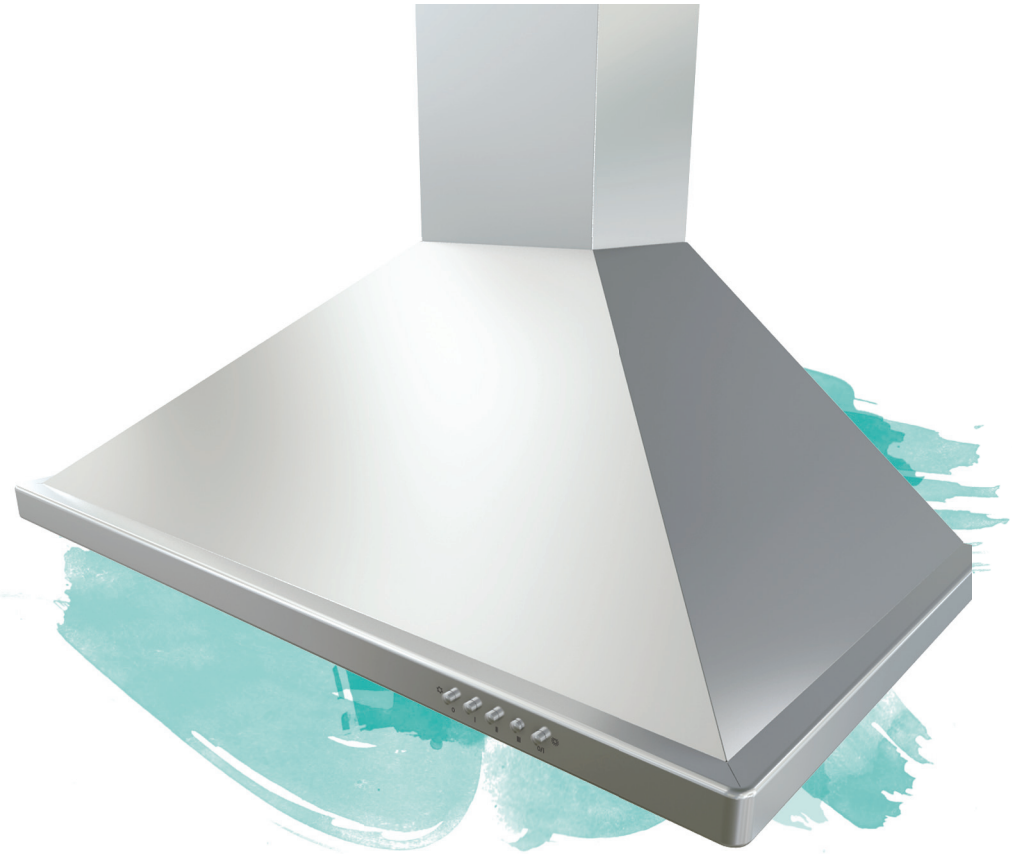
Get noticed!

Brisas BVE

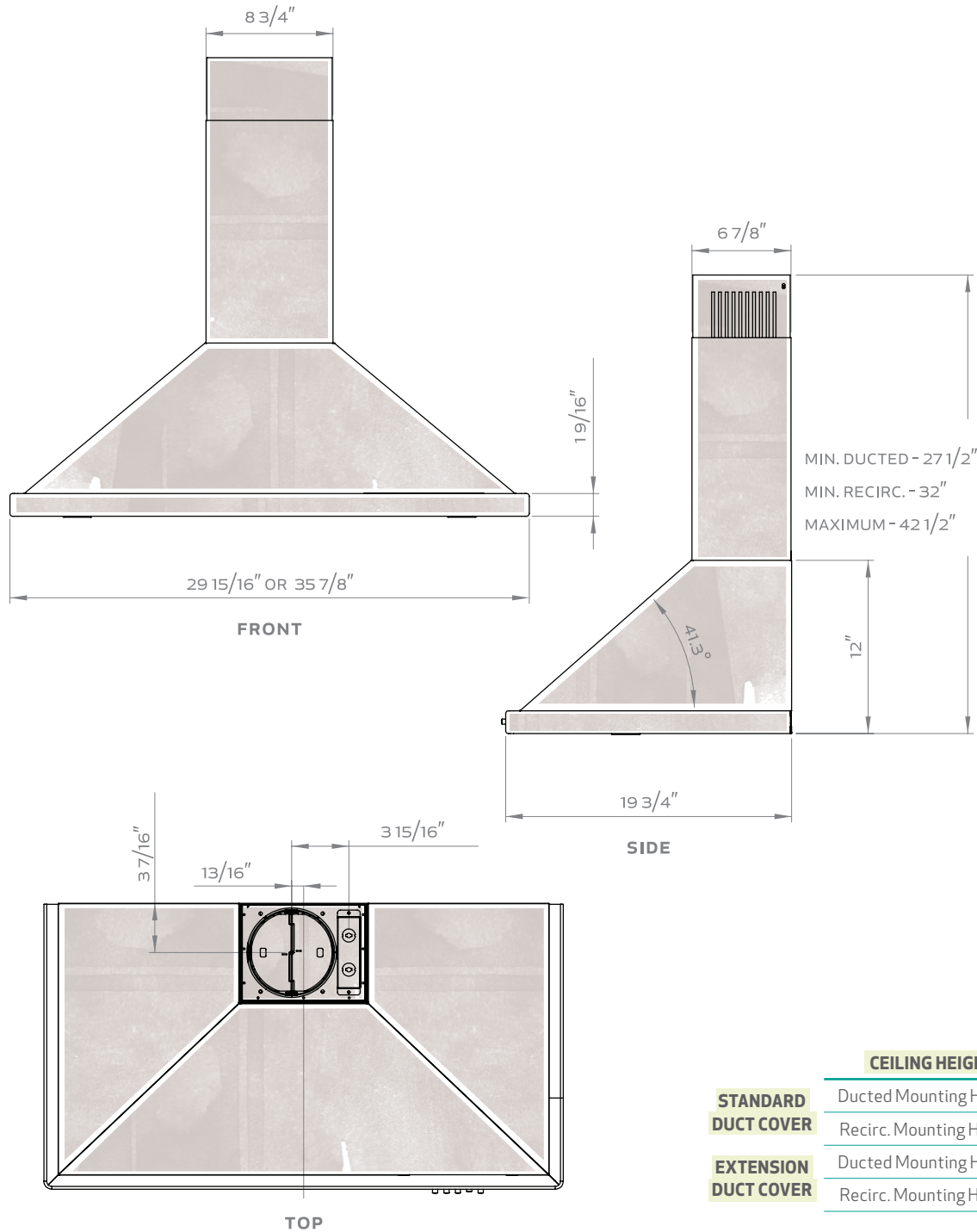
The Brisas BVE wall-mounted range hood makes quite an impression. From its pro-style pyramid design to its 600 CFM internally installed motor, BVE is head and shoulders above the competition. Relying on the highest quality manufacturing standards, BVE exudes strength that lasts and quality that is easy to relate to: easy-to-install out-of-the-box design, high-grade stainless steel, tight seams and precision metal folding for seamless corners and edges.

FEATURES OF HIGH QUALITY

- Available in 30" and 36"
- Available with 600-cfm or 290-cfm internally installed motor
- Reliable 3-speed mechanical controls
- Sturdy stainless steel construction
- Durable, washable 5-ply aluminum mesh filters
- Optional recirculation kit
- Standard telescopic duct covers up to 9' ceilings
- Optional duct cover extensions for up to 12' ceilings
- Designed for 6-inch vertical ducted installations



Brisas BVE



	BVE-E30AS / BVE-E30AS290	BVE-E36AS / BVE-E36AS290
SIZE	30"	36"
NET WIDTH	29-15/16"	35-7/8"
PERFORMANCE		
Blower CFM, Max.	600 / 290	600 / 290
Sones, Max.	6 / 2.8	6 / 2.8
COLOR		
Stainless Steel	SS	SS
FEATURES		
Controls	Mechanical Push Button	Mechanical Push Button
Speed Levels	3	3
Delay Off	No	No
Lighting	Halogen, 50W x2	Halogen, 50W x2
Dual Level Lighting	No	No
Filters	Stainless Steel Mesh	Stainless Steel Mesh
Recirculating Option	Yes	Yes
Extension Duct Cover Option	Yes, Up to 12' Ceiling	Yes, Up to 12' Ceiling
DUCT SPECIFICATIONS		
Internal Blower - Vertical	6" round	6" round
Internal Blower - Horizontal	NA	NA
AC INPUT	120V - 60Hz	120V - 60Hz
AC POWER	400W, 3.5A / 170W, 1.5A	400W, 3.5A / 170W, 1.5A
OPTIONAL ACCESSORIES		
Recirculating Kit	BRC-0001	BRC-0001
Extension Duct Cover	B1C-00VE	B1C-00VE
MOUNTING HEIGHT*	26" - 34"	26" - 34"

	CEILING HEIGHT	8'	8.5'	9'	9.5'	10'	10.5'	11'	12'
STANDARD DUCT COVER	Ducted Mounting Height*	26"-32.5"	26"-34"	29.5"-34"	N/A	N/A	N/A	N/A	N/A
	Recirc. Mounting Height*	26"-28"	26"-34"	29.5"-34"	N/A	N/A	N/A	N/A	N/A
EXTENSION DUCT COVER	Ducted Mounting Height*	N/A	N/A	26"-26.5"	26"-32.5"	26"-34"	26"-34"	26"-34"	28"-34"
	Recirc. Mounting Height*	N/A	N/A	N/A	26"-28.5"	26"-34"	26"-34"	26"-34"	28"-34"

*Mounting height refers to distance between top of a 36" tall cooking surface and bottom of hood.