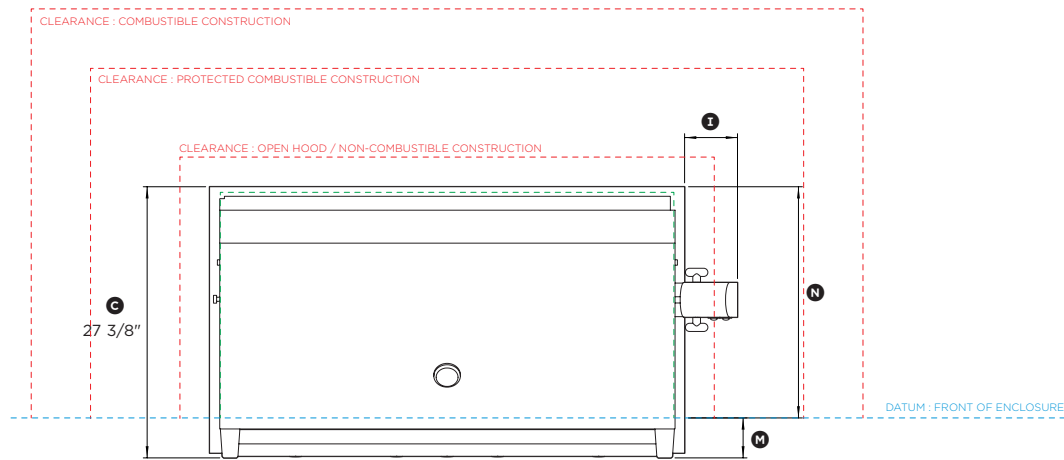
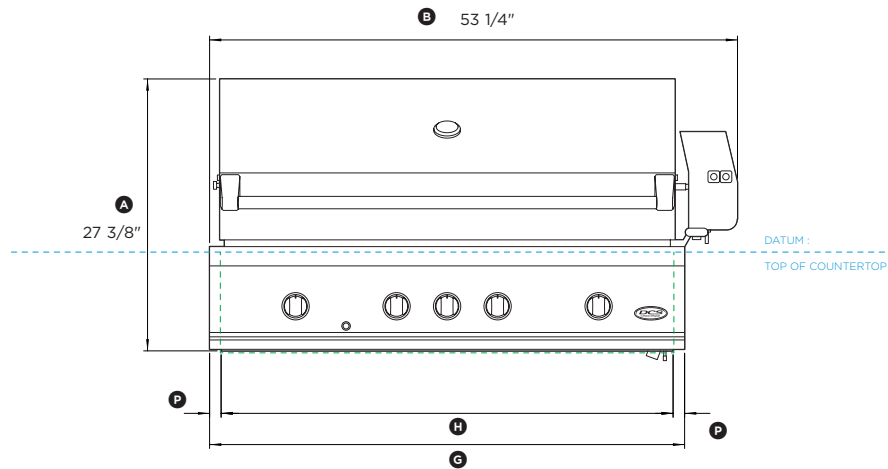


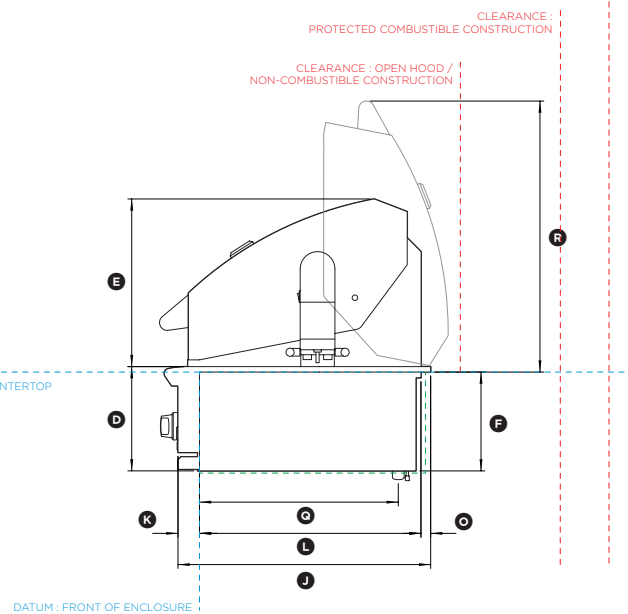
Data sheet



PLAN VIEW



FRONT VIEW



PROFILE VIEW



48" Outdoor Grill

Model no:

BE1-48RC (refer page 2 for metric measurements)

| Dimensions | in |
|---|-----------|
| Ⓐ Overall height of grill | 27 3/8" |
| Ⓑ Overall width of grill | 53 1/4" |
| Ⓒ Overall depth of grill | 27 3/8" |
| Ⓓ Height of chassis | 10 1/2" |
| Ⓔ Height from top of hood to top of chassis | 16 15/16" |
| Ⓕ Height of chassis below countertop | 9 15/16" |
| Ⓖ Overall width of chassis | 47 15/16" |
| Ⓗ Width of chassis inside enclosure | 45 9/16" |
| Ⓘ Width from right side of chassis to right side of motor cover | 5 5/16" |
| Ⓢ Depth from control panel to rear of product | 25 1/2" |
| Ⓚ Depth from control panel to front datum | 2 3/16" |
| Ⓛ Depth from front datum to rear of chassis below countertop | 22 5/16" |
| Ⓜ Depth from front of product to front datum | 4" |
| Ⓝ Depth from rear of product to front datum | 23 5/16" |
| Ⓞ Depth of rear flange | 1" |
| Ⓟ Width of side flanges | 1 3/16" |
| Ⓠ Distance from gas inlet to front datum | 20 1/16" |
| Ⓡ Height from top of open hood to top of countertop | 27 3/8" |

| Minimum Clearances | in |
|--|---------|
| Overall width of cavity | 45 3/4" |
| Overall depth of cavity | 22 3/4" |
| Overall height of cavity | 10 1/8" |
| Clearance to combustible construction* | 3" |
| Clearance to protected combustible construction* | 12" |
| Clearance to non-combustible construction* | 18" |

* Minimum clearance measured from grill base.

NOTE: See installation manual for full installation requirements and definitions.

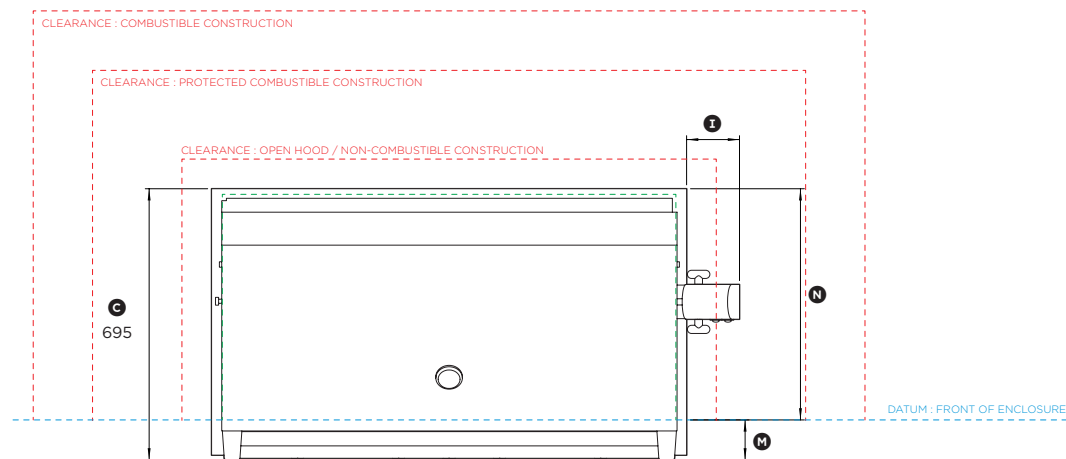
INDICATES CUTOUT
INDICATES PRODUCT DATUM
INDICATES CLEARANCES

DATE: 19.02.2019

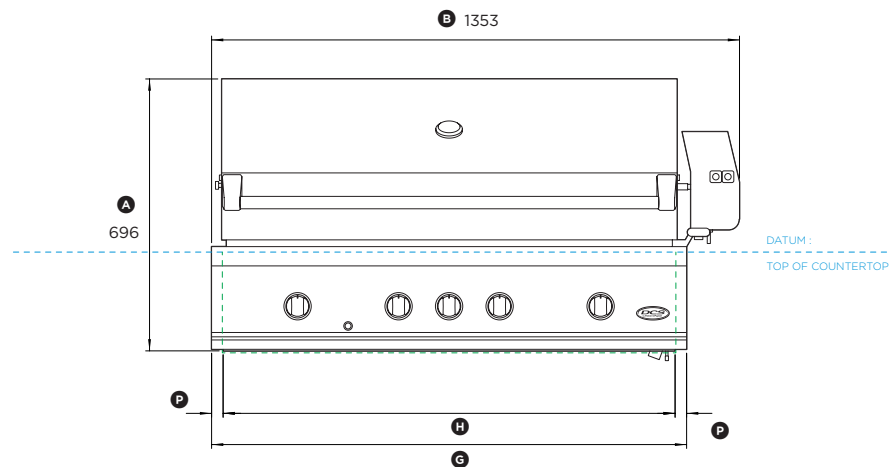
IMPORTANT NOTE: Throughout this guide, dimensions may vary by ±2mm (1/16"). Please read the installation manual for detailed information on installing the product. For full installation instructions & specifications visit www.dcsappliances.com



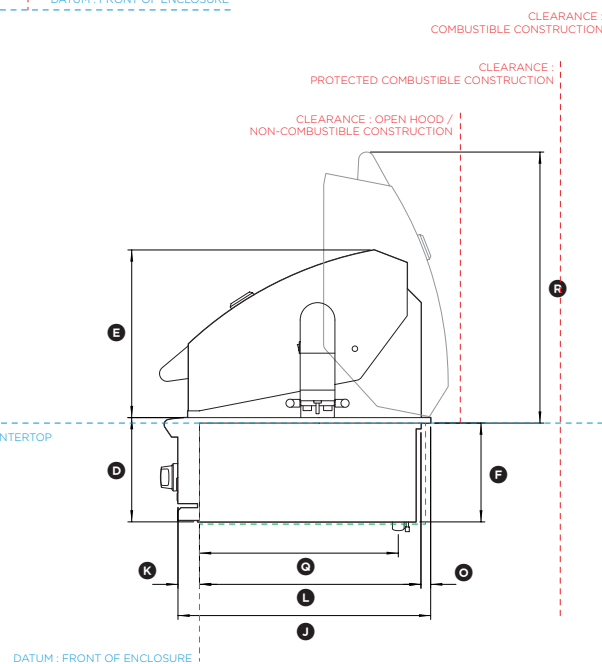
Data sheet



PLAN VIEW



FRONT VIEW



PROFILE VIEW



48'' Outdoor Grill

Model no:

BE1-48RC (refer page 1 for imperial measurements)

| Dimensions | mm |
|---|------|
| Ⓐ Overall height of grill | 696 |
| Ⓑ Overall width of grill | 1353 |
| Ⓒ Overall depth of grill | 695 |
| Ⓓ Height of chassis | 267 |
| Ⓔ Height from top of hood to top of chassis | 430 |
| Ⓕ Height of chassis below countertop | 253 |
| Ⓖ Overall width of chassis | 1217 |
| Ⓗ Width of chassis inside enclosure | 1158 |
| Ⓙ Width from right side of chassis to right side of motor cover | 135 |
| ⓫ Depth from control panel to rear of product | 647 |
| ⓬ Depth from control panel to front datum | 55 |
| ⓭ Depth from front datum to rear of chassis below countertop | 567 |
| ⓯ Depth from front of product to front datum | 102 |
| ⓰ Depth from rear of product to front datum | 592 |
| ⓱ Depth of rear flange | 25 |
| ⓲ Width of side flanges | 29.5 |
| ⓳ Distance from gas inlet to front datum | 509 |
| ⓴ Height from top of open hood to top of countertop | 695 |

| Minimum Clearances | mm |
|--|------|
| Overall width of cavity | 1162 |
| Overall depth of cavity | 578 |
| Overall height of cavity | 257 |
| Clearance to combustible construction* | 76 |
| Clearance to protected combustible construction* | 305 |
| Clearance to non-combustible construction* | 457 |

* Minimum clearance measured from grill base.

NOTE: See installation manual for full installation requirements and definitions.

INDICATES CUTOUT
INDICATES PRODUCT DATUM
INDICATES CLEARANCES

DATE: **19.02.2019**

IMPORTANT NOTE: Throughout this guide, dimensions may vary by $\pm 2\text{mm}$ (1/16"). Please read the installation manual for detailed information on installing the product. For full installation instructions & specifications visit www.dcsappliances.com

